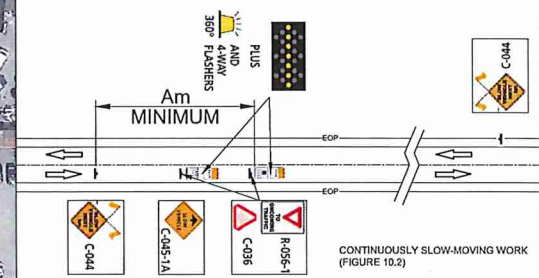


CONTINUOUSLY SLOW-MOVING WORK TO ALLOW AERIAL CABLE SPLICING (SEE INSET A)



NOTES:

1. THE WORK REQUIRING THE TRAFFIC CONTROL MEASURE INVOLVES SPLICING OF FIBER OPTIC CABLE AT POLE A LOCATED ON THE NORTHSIDE OF YALE RD (APPROX. 195m EAST FROM ATCHELITZ RD) AND ALSO THE PLACING AND SPLICING FROM POLE J17 (APPROX. 10m EAST FROM ATCHELITZ RD) TO J16 LOCATED ON THE EAST SIDE OF ATCHELITZ RD (APPROX. 65m NORTH FROM YALE Rd) VIA J17B. THE DURATION OF USE OF THIS MEASURE WILL BE UNTIL THE WORK IS COMPLETED.
2. LANE CLOSURES ARE AS NOTED IN THIS LAYOUT.
3. TIMING OF THE WORKS WILL BE FROM 8:30AM TO 4:30 PM.
4. LOCATION OF THE WORK ZONE IS AS INDICATED ON THIS PLAN FOR CONSTRUCTION.
5. THE MEASURES SHOWN IN THIS TRAFFIC MANAGEMENT PLAN IS IN ACCORDANCE TO THE "BC TRAFFIC MANAGEMENT MANUAL FOR WORK ON ROADWAYS (2015 INTERIM)". CHANGES TO THIS LAYOUT MAY BE MADE BY THE TRAFFIC CONTROL PERSON IN CHARGE TO REFLECT FIELD CONDITIONS.
6. PRIORITY ACCESS WILL BE GIVEN TO EMERGENCY VEHICLES.
7. TRAFFIC CONTROL PLAN IS DESIGNED BASED ON FIGURE 7.6 (WORK IN THE PARKING LANE) & 10.2 (CONTINUOUSLY SLOW-MOVING WORK)
8. ALL DIMENSIONS ARE IN METRES.

CONTACT INFORMATION:

SHANE BELFRY:
778-870-9562

LEGEND			
	Flexible Drum		Paint Truck
	Tubular Marker		Escort Truck
	Cone		Chaser Vehicle
	Sign		Vehicle Mounted Rear Crash Attenuator
	Traffic Control Person		360° Flashing Light
	Work Activity Area		Portable Traffic Signal
	Work Truck		Barricade and Fencing
	Shadow Vehicle		Flashing Arrow Board (FAB)
	Shadow Vehicle #1		Flashing Arrow Board (FAB) in caution mode
	Shadow Vehicle #2		Dynamic Message Sign (DMS)
	Buffer Vehicle		

TABLE A – TAPER LENGTHS										
Taper Types (m)	Regulatory Speed Limit before Work Begins (km/h)									
	≤ 50	60	70	80	90	100	110	120		
Merge Taper Length	35	55	160	190	210	230	250	280		
Lane Shift Taper Length	4	30	50	80	100	110	120	130	140	
Downstream Taper Length	4	30	30	30	30	30	30	30	30	
TCP, Signal, and Shoulder Taper Length (min. 5 devices)	4	5	8	15	15	15	15	15	15	
Minimum Tangent Length between Tapers	4	30	60	160	190	210	230	250	280	
Run-in Length on Centreline	4	40	50	60	60	70	80	90	100	

TABLE B – DEVICE SPACING LENGTHS										
Device Spacing (m)	Regulatory Speed Limit before Work Begins (km/h)									
	≤ 50	60	70	80	90	100	110	120		
Construction Sign Spacing	A	40	60	80	100	150	150	200	200	
Buffer Space	B	30	40	60	80	110	140	170	200	
Channelling Device Spacing for Tapers	C	10	10	15	15	15	15	15	15	
Channelling Device Spacing on Curves and Tangents	D	10	10	30	30	40	40	40	50	



BC ONE CALL

CALL BEFORE YOU DIG
1 800-474-6888
VANCOUVER AREA
604-257-1940



CONSTRUCTION	PERMIT
REV. DESCRIPTION	SUBMITTED DATE
REV. DESCRIPTION	ISSUE DATE
REV. DESCRIPTION	ISSUE DATE
REV. DESCRIPTION	APPROVED
REV. DESCRIPTION	DATE
REV. DESCRIPTION	AS CONSTRUCTED DATE
REV. DESCRIPTION	CONTRACTOR

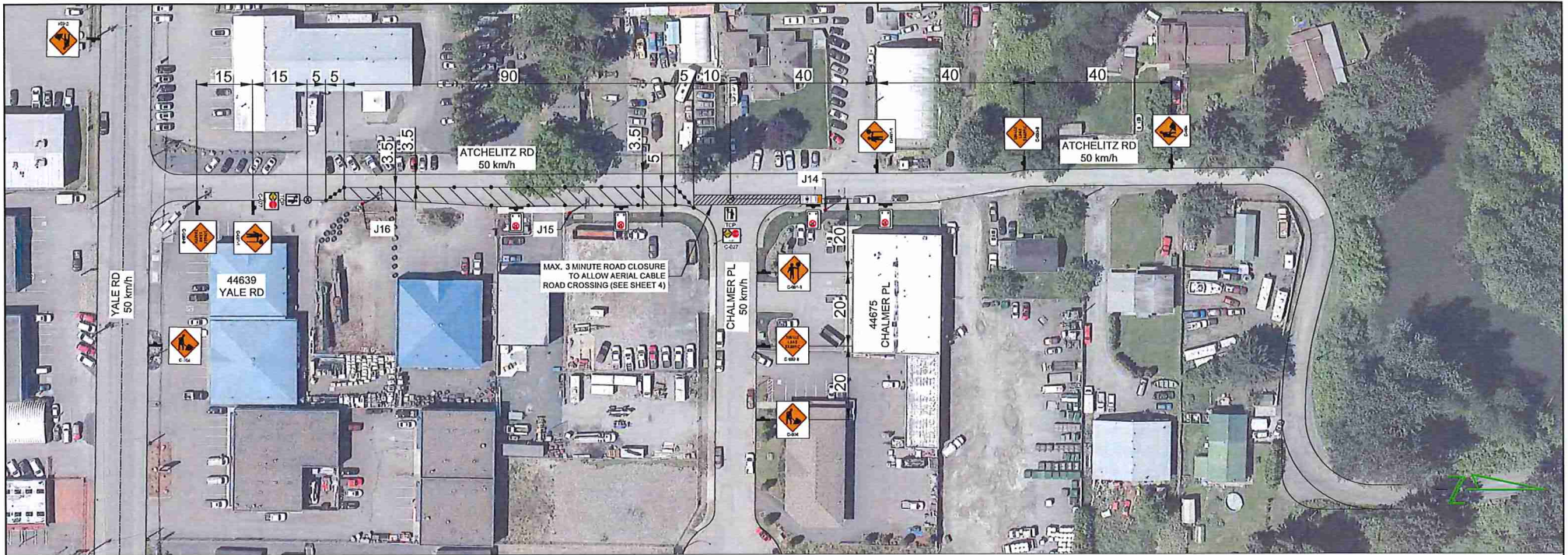
DESIGN DL	DR. CK
04-209-142	SCALE: NTS
	DATE: 10/20/2018
	ASSOCIATED DRAWINGS
1.	
2.	
3.	
REP:	

THE WORKS PROPOSED ON THIS DRAWING SHALL AT ALL TIMES REMAIN THE PROPERTY OF TELUS TO ACCOMMODATE TELECOM CABLE PLACING & SPLICING

NEAR THE INTERSECTION OF YALE RD & ATCHELITZ RD, CHILLIWACK

PROJECT # 181364

SHEET 1



NOTES:

1. THE WORK REQUIRING THE TRAFFIC CONTROL MEASURE INVOLVES THE PLACING AND SPLICING OF FIBER OPTIC CABLE FROM POLE J16 LOCATED ON THE EAST SIDE OF ATCHELITZ RD (APPROX. 65m NORTH FROM YALE RD TO J14 LOCATED ON THE EAST SIDE OF ATCHELITZ RD. (APPROX. 24m NORTH FROM CHALMER PL) VIA J15. THE DURATION OF USE OF THIS MEASURE WILL BE UNTIL THE WORK IS COMPLETED.
2. LANE CLOSURES ARE AS NOTED IN THIS LAYOUT.
3. TIMING OF THE WORKS WILL BE FROM 8:30AM TO 4:30 PM.
4. LOCATION OF THE WORK ZONE IS AS INDICATED ON THIS PLAN FOR CONSTRUCTION.
5. A TEMPORARY ROAD CLOSURE OF A MAX. 3 MINUTE DURATION IS REQUIRED TO ACCOMMODATE AERIAL CABLE PLACING. TCPS WILL BE ON SITE TO PROVIDE DIRECTIONS TO AFFECTED TRAFFIC.
6. THE MEASURES SHOWN IN THIS TRAFFIC MANAGEMENT PLAN IS IN ACCORDANCE TO THE "BC TRAFFIC MANAGEMENT MANUAL FOR WORK ON ROADWAYS (2015 INTERIM)". CHANGES TO THIS LAYOUT MAY BE MADE BY THE TRAFFIC CONTROL PERSON IN CHARGE TO REFLECT FIELD CONDITIONS.
7. PRIORITY ACCESS WILL BE GIVEN TO EMERGENCY VEHICLES.
8. TRAFFIC CONTROL PLAN IS DESIGNED BASED ON FIGURE 7.8 (SINGLE LANE ALTERNATING).
9. ALL DIMENSIONS ARE IN METRES.

CONTACT INFORMATION:

SHANE BELFRY:
778-870-9562

LEGEND			
	Flexible Drum		Paint Truck
	Tubular Marker		Escort Truck
	Cone		Chaser Vehicle
	Sign		Vehicle Mounted Rear Crash Attenuator
	Traffic Control Person		360° Flashing Light
	Work Activity Area		Portable Traffic Signal
	Work Truck		Barricade and Fencing
	Shadow Vehicle		Flashing Arrow Board (FAB)
	Shadow Vehicle #1		Flashing Arrow Board (FAB) in caution mode
	Shadow Vehicle #2		Dynamic Message Sign (DMS)
	Buffer Vehicle		

TABLE A - TAPER LENGTHS									
Taper Types (m)	Regulatory Speed Limit before Work Begins (km/h)								
	≤ 50	60	70	80	90	100	110	120	
Merge Taper Length	4	35	55	160	190	210	230	250	280
Lane Shift Taper Length	5	30	50	80	100	110	120	130	140
Downstream Taper Length	4	30	30	30	30	30	30	30	30
TCP, Signal, and Shoulder Taper Length (min. 5 devices)	4	5	8	15	15	15	15	15	15
Minimum Tangent Length between Tapers	4	30	60	160	190	210	230	250	280
Run-in Length on Centreline	4	40	50	60	60	70	80	90	100

TABLE B - DEVICE SPACING LENGTHS									
Device Spacing (m)	Regulatory Speed Limit before Work Begins (km/h)								
	≤ 50	60	70	80	90	100	110	120	
Construction Sign Spacing	A	40	60	80	100	150	150	200	200
Buffer Space	B	30	40	60	80	110	140	170	200
Channelizing Device Spacing for Tapers	C	10	10	15	15	15	15	15	15
Channelizing Device Spacing on Curves and Tangents	D	10	10	30	30	40	40	40	50

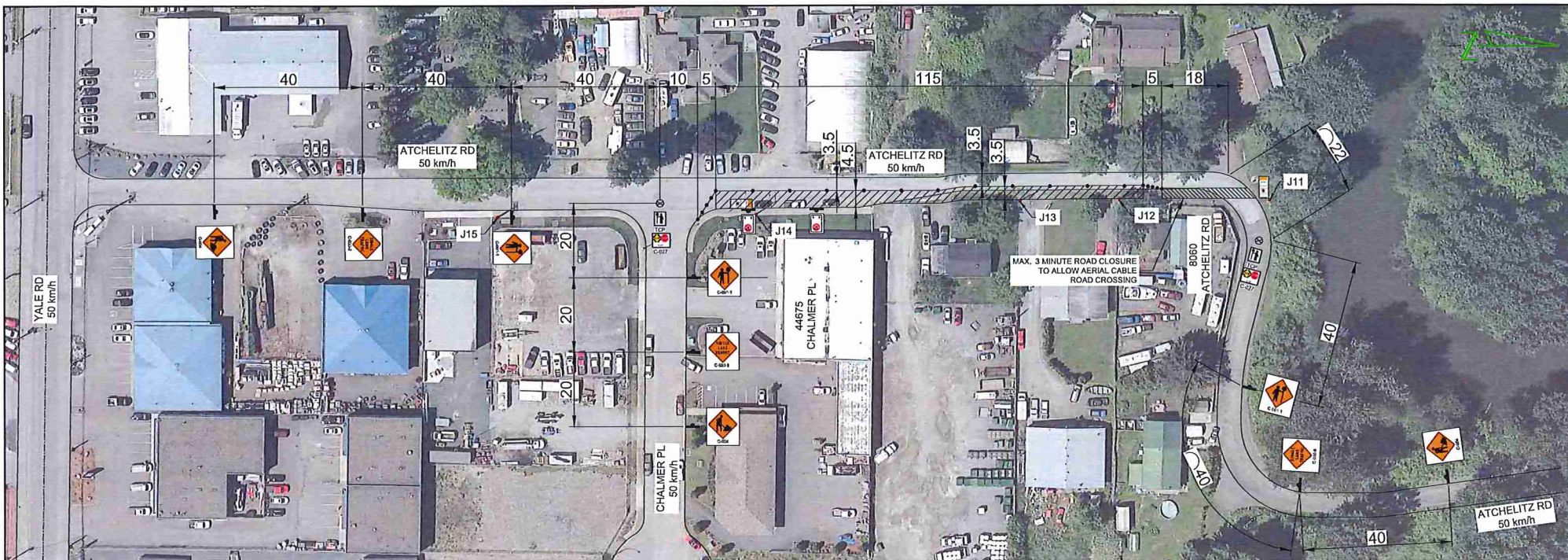


BC ONE CALL

CALL BEFORE YOU DIG
1 800-474-6886
VANCOUVER AREA
604-257-1840



CONSTRUCTION	PERMIT	DESIGN: DL	DPL: DL	THE WORKS PROPOSED ON THIS DRAWING SHALL AT ALL TIMES REMAIN THE PROPERTY OF TELUS	
REV. DESCRIPTION:	SUBMITTED DATE:	604-579-1942	SCALE: NTS	PROPOSED TRAFFIC CONTROL LAYOUT	
REV. DESCRIPTION:	RE-SUB DATE:		DATE: 16/APR/2018	TO ACCOMMODATE	
REV. DESCRIPTION:	RE-SUB DATE:		ASSOCIATED DRAWINGS:	TELECOM CABLE PLACING & SPLICING	
REV. DESCRIPTION:	APPROVED DATE:	1		ON ATCHELITZ RD BETWEEN YALE RD	
REV. DESCRIPTION:	DATE:	2		& CHALMER PL, CHILWICK	
REV. DESCRIPTION:	AS CONSTRUCTED DATE:	3		PROJECT #: 181354	
REV. DESCRIPTION:	CONTRACTOR:	4		SHEET 2	
REV. DESCRIPTION:	REF:				



NOTES:

1. THE WORK REQUIRING THE TRAFFIC CONTROL MEASURE INVOLVES THE PLACING AND SPLICING OF FIBER OPTIC CABLE FROM J14 LOCATED ON THE EAST SIDE OF ATCHELITZ RD. (APPROX. 24m NORTH FROM CHALMER PL) TO J11 LOCATED ON THE NORTH SIDE OF ATCHELITZ RD (APPROX. 160m NORTH FROM CHALMER PL) VIA J13 & J12 IN ABBOTSFORD. THE DURATION OF USE OF THIS MEASURE WILL BE UNTIL THE WORK IS COMPLETED.
2. LANE CLOSURES ARE AS NOTED IN THIS LAYOUT.
3. TIMING OF THE WORKS WILL BE FROM 8:30AM TO 4:30 PM.
4. LOCATION OF THE WORK ZONE IS AS INDICATED ON THIS PLAN FOR CONSTRUCTION.
5. A TEMPORARY ROAD CLOSURE OF A MAX. 3 MINUTE DURATION IS REQUIRED TO ACCOMMODATE AERIAL CABLE PLACING. TCPS WILL BE ON SITE TO PROVIDE DIRECTIONS TO AFFECTED TRAFFIC.
6. THE MEASURES SHOWN IN THIS TRAFFIC MANAGEMENT PLAN IS IN ACCORDANCE TO THE "BC TRAFFIC MANAGEMENT MANUAL FOR WORK ON ROADWAYS (2015 INTERIM)". CHANGES TO THIS LAYOUT MAY BE MADE BY THE TRAFFIC CONTROL PERSON IN CHARGE TO REFLECT FIELD CONDITIONS.
7. PRIORITY ACCESS WILL BE GIVEN TO EMERGENCY VEHICLES.
8. TRAFFIC CONTROL PLAN IS DESIGNED BASED ON FIGURE 7.8 (SINGLE LANE ALTERNATING).
9. ALL DIMENSIONS ARE IN METRES.

CONTACT INFORMATION:

SHANE BELFRY:
778-870-9562

LEGEND	
Flexible Drum	Paint Truck
Tubular Marker	Escort Truck
Cone	Chaser Vehicle
Sign	Vehicle Mounted Rear Crash Attenuator
Traffic Control Person	360° Flashing Light
Work Activity Area	Portable Traffic Signal
Work Truck	Barriade and Fencing
Shadow Vehicle	Flashing Arrow Board (FAB)
Shadow Vehicle #1	Flashing Arrow Board (FAB) in caution mode
Shadow Vehicle #2	Dynamic Message Sign (DMS)
Buffer Vehicle	

TABLE A - TAPER LENGTHS									
Taper Types (m)	Regulatory Speed Limit before Work Begins (km/h)								
	≤ 50	60	70	80	90	100	110	120	
Merge Taper Length	4	35	55	160	190	210	230	250	280
Lane Shift Taper Length	5	30	50	80	100	110	120	130	140
Downstream Taper Length	4	30	30	30	30	30	30	30	30
TCP, Signal, and Shoulder Taper Length (min. 5 devices)	4	5	8	15	15	15	15	15	15
Minimum Tangent Length between Tapers	4	30	60	160	190	210	230	250	280
Run-in Length on Centreline	4	40	50	60	60	70	80	90	100

TABLE B - DEVICE SPACING LENGTHS									
Device Spacing (m)	Regulatory Speed Limit before Work Begins (km/h)								
	≤ 50	60	70	80	90	100	110	120	
Construction Sign Spacing	A	40	60	80	100	150	150	200	200
Buffer Space	B	30	40	60	80	110	140	170	200
Channelizing Device Spacing for Tapers	C	10	10	15	15	15	15	15	15
Channelizing Device Spacing on Curves and Tangents	D	10	10	30	30	40	40	40	50



BC ONE CALL

CALL BEFORE YOU DIG
1 800-474-6886
VANCOUVER AREA
604-257-1940

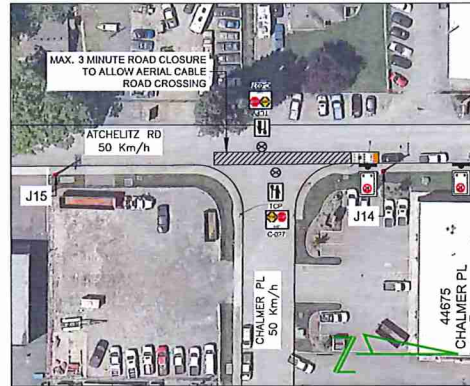


CONSTRUCTION		PERMIT		DESIGN/CL		DPL/CL		THE WORKS PROPOSED ON THIS DRAWING SHALL AT ALL TIMES REMAIN THE PROPERTY OF TELUS	
REV. DESCRIPTION:	DATE:	SUBMITTED DATE:	DATE:	004-529-1942	SCALE: NTS	PROPOSED TRAFFIC CONTROL LAYOUT TO ACCOMMODATE TELECOM CABLE PLACING & SPLICING			
REV. DESCRIPTION:	DATE:	RE-SUB DATE:	DATE:		DATE: 18/4/2018	ON THE EASTSIDE OF ATCHELITZ RD (NORTH OF CHALMER PL), CHILLIWACK, BC			
REV. DESCRIPTION:	DATE:	RE-SUB DATE:	DATE:		ASSOCIATED DRAWINGS:	PROJECT P. 181364			
REV. DESCRIPTION:	DATE:	RE-SUB DATE:	DATE:		1.	SHEET 3			
REV. DESCRIPTION:	DATE:	RE-SUB DATE:	DATE:		2.				
REV. DESCRIPTION:	DATE:	RE-SUB DATE:	DATE:		3.				
REV. DESCRIPTION:	DATE:	RE-SUB DATE:	DATE:		REF:				

TABLE A – TAPER LENGTHS									
Taper Types (m)	Regulatory Speed Limit before Work Begins (km/h)								
	≤ 50	60	70	80	90	100	110	120	
Merge Taper Length	35	55	160	190	210	230	250	280	
Lane Shift Taper Length	30	50	80	100	110	120	130	140	
Downstream Taper Length	30	30	30	30	30	30	30	30	
TCR, Signal, and Shoulder Taper Length (min. 5 devices)	5	8	15	15	15	15	15	15	
Minimum Tangent Length between Tapers	30	60	160	190	210	230	250	280	
Run-in Length on Centreline	40	50	60	60	70	80	90	100	

TABLE B – DEVICE SPACING LENGTHS									
Device Spacing (m)	Regulatory Speed Limit before Work Begins (km/h)								
	≤ 50	60	70	80	90	100	110	120	
Construction Sign Spacing	A	40	60	80	100	150	150	200	200
Buffer Space	B	30	40	60	80	110	140	170	200
Channelling Device Spacing for Tapers	C	10	10	15	15	15	15	15	15
Channelling Device Spacing on Curves and Tangents	D	10	10	30	30	40	40	40	50

LEGEND			
	Flexible Drum		Paint Truck
	Tubular Marker		Escort Truck
	Cone		Chaser Vehicle
	Sign		Vehicle Mounted Rear Crash Attenuator
	Traffic Control Person		360° Flashing Light
	Work Activity Area		Portable Traffic Signal
	Work Truck		Barricade and Fencing
	Shadow Vehicle		Flashing Arrow Board (FAB)
	Shadow Vehicle #1		Flashing Arrow Board (FAB) in caution mode
	Shadow Vehicle #2		Dynamic Message Sign (DMS)
	Buffer Vehicle		



ROAD CROSSING FROM J15 TO J14

CONTACT INFORMATION:

SHANE BELFRY:
778-870-9562



BC ONE CALL

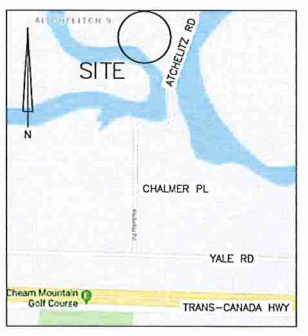
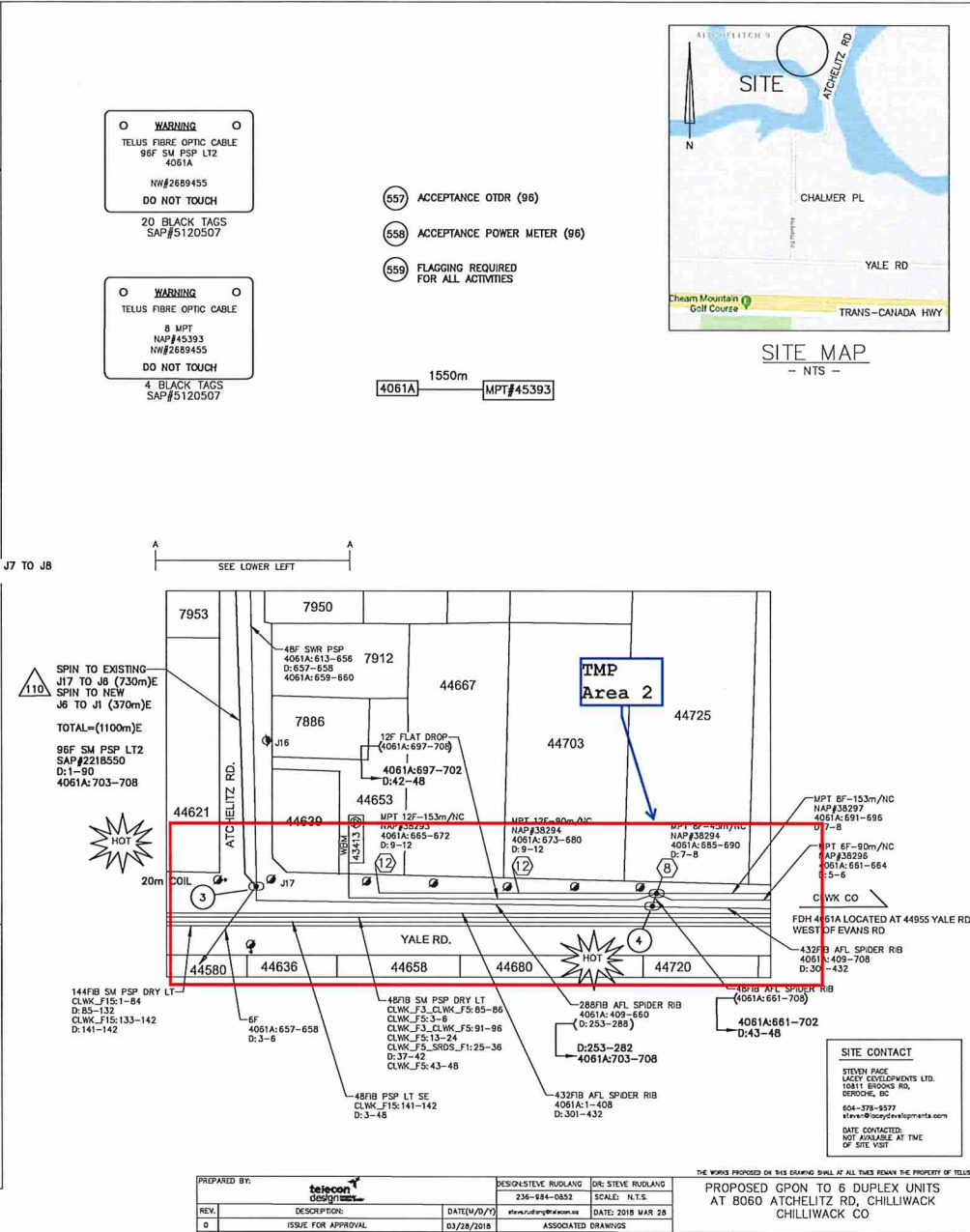
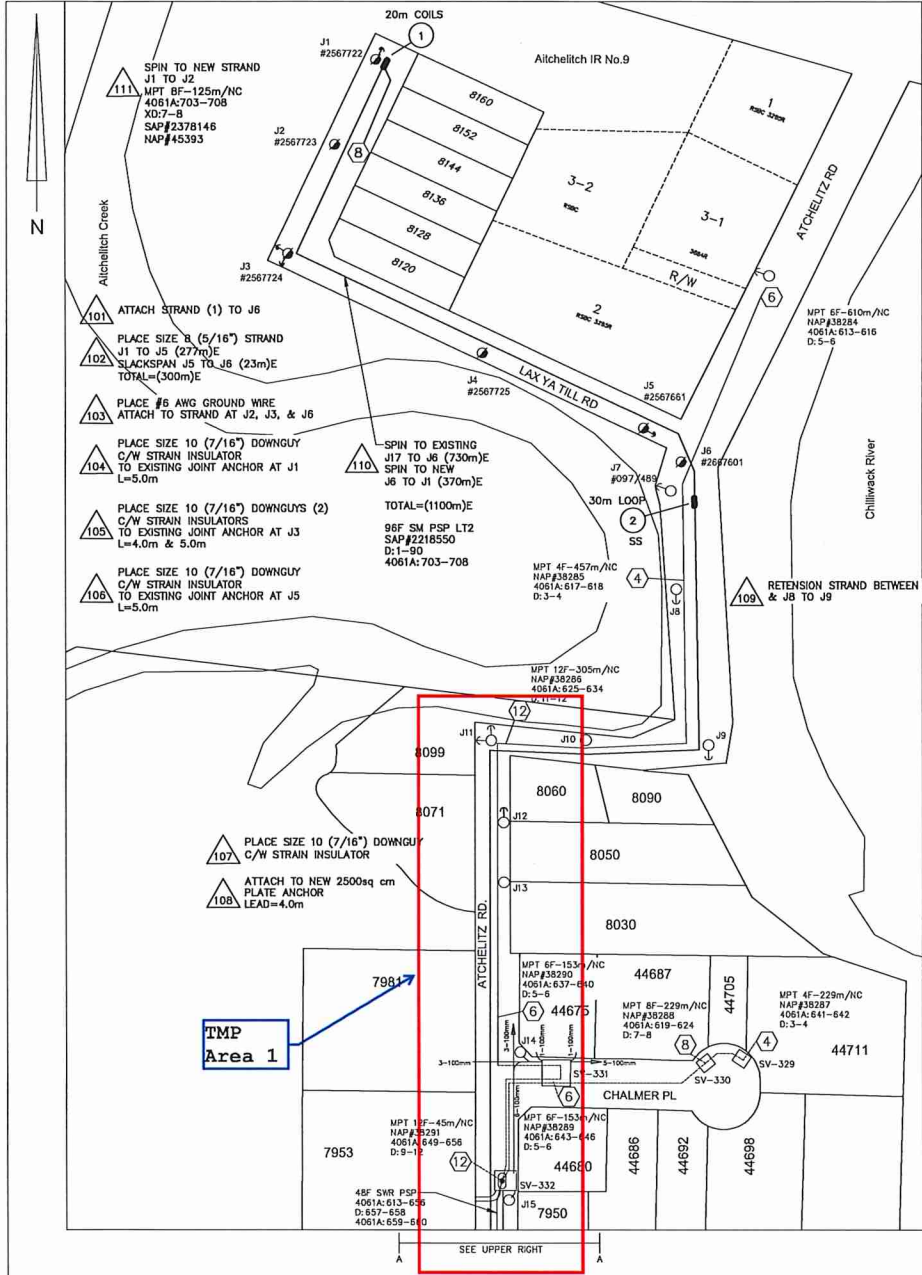
CALL BEFORE YOU DIG
1 800-474-6886
VANCOUVER AREA
604-257-1940



CONSTRUCTION	PERMIT	DESIGN CL	DIR. CL	THE WORKS PROVIDED ON THIS DRAWING SHALL AT ALL TIMES REMAIN THE PROPERTY OF TELUS LAYOUTS FOR AERIAL CABLE ROAD CROSSINGS
REV. DESCRIPTION:	SUBMITTED DATE:	604-529-1940	SCALE: NTS	
REV. DESCRIPTION:	RE-SUB DATE:		DATE: 18 APR 2018	
REV. DESCRIPTION:	APPROVED:	ASSOCIATED DRAWINGS		
REV. DESCRIPTION:	DATE:	1.		
REV. DESCRIPTION:	AS CONSTRUCTED DATE:	2.		
REV. DESCRIPTION:	CONTRACTOR:	3.		
		REF:		

PROJECT #:
181364

SHEET 4



WARNING
 TELUS FIBRE OPTIC CABLE
 96F SWR PSP LT2
 4061A
 NW#2889455
 DO NOT TOUCH

WARNING
 TELUS FIBRE OPTIC CABLE
 8 MPT
 NAP#45393
 NW#2889455
 DO NOT TOUCH
 4 BLACK TAGS
 SAP#5120507

- (557) ACCEPTANCE OTRD (96)
- (558) ACCEPTANCE POWER METER (96)
- (559) FLAGGING REQUIRED FOR ALL ACTIVITIES

4061A 1550m MPT#45393

SEE LOWER LEFT

- 107 PLACE SIZE 10 (7/16") DOWNGUY C/W STRAIN INSULATOR
- 108 ATTACH TO NEW 2500sq cm PLATE ANCHOR LEAD=4.0m

TMP Area 1

TMP Area 2

SITE CONTACT
 STEVEN PAGE
 LACY DEVELOPMENTS LTD.
 10811 BIRCH RD.
 DERWOOD, BC
 604-378-8577
 Steve.P@lacydevelopments.com
 DATE CONTACTED:
 NOT AVAILABLE AT TIME
 OF SITE VISIT

THE WORKS PROPOSED ON THIS DRAWING SHALL AT ALL TIMES REMAIN THE PROPERTY OF TELUS

PREPARED BY:	DESIGN: STEVE RUOLANG	DRAWN: STEVE RUOLANG
236-894-8585	SCALE: 1/16"	
DATE: 2018 MAR 28	DATE: 2018 MAR 28	
PROPOSED GPON TO 6 DUPLEX UNITS AT 8060 ATCHELTZ RD, CHILLIWACK CHILLIWACK CO		
ISSUE FOR APPROVAL	ASSOCIATED DRAININGS	C.O. CODE
03/28/2018	2184924U, 2611555C	CLWK
	BOI DESIGN # 0004102387	
	2689455P	